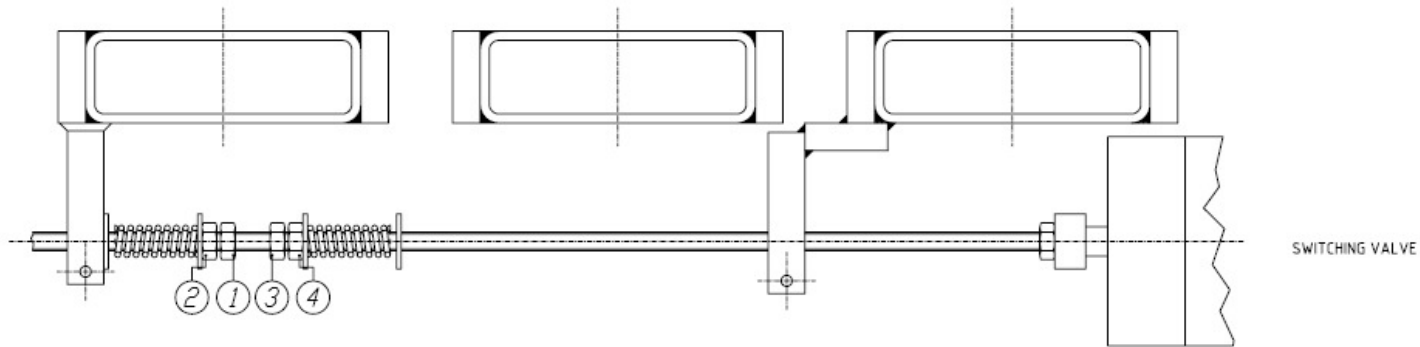


Adjustment threaded rod



UK

- 1) Turn the nuts (1, 2, 3 and 4) as far back, that the switching valve isn't operated.
- 2) Engage the system with an empty floor.
- 3) The system will now stop at the position, where the switching valve will not be switched.
- 4) Shut off the system.
- 5) Switch the threaded rod by hand.
- 6) Turn the nuts (1/2 or 3/4) that far, that there is fully compression of the spring and lock them (compression=18 mm).
- 7) Repeat this procedure also for the other side.